

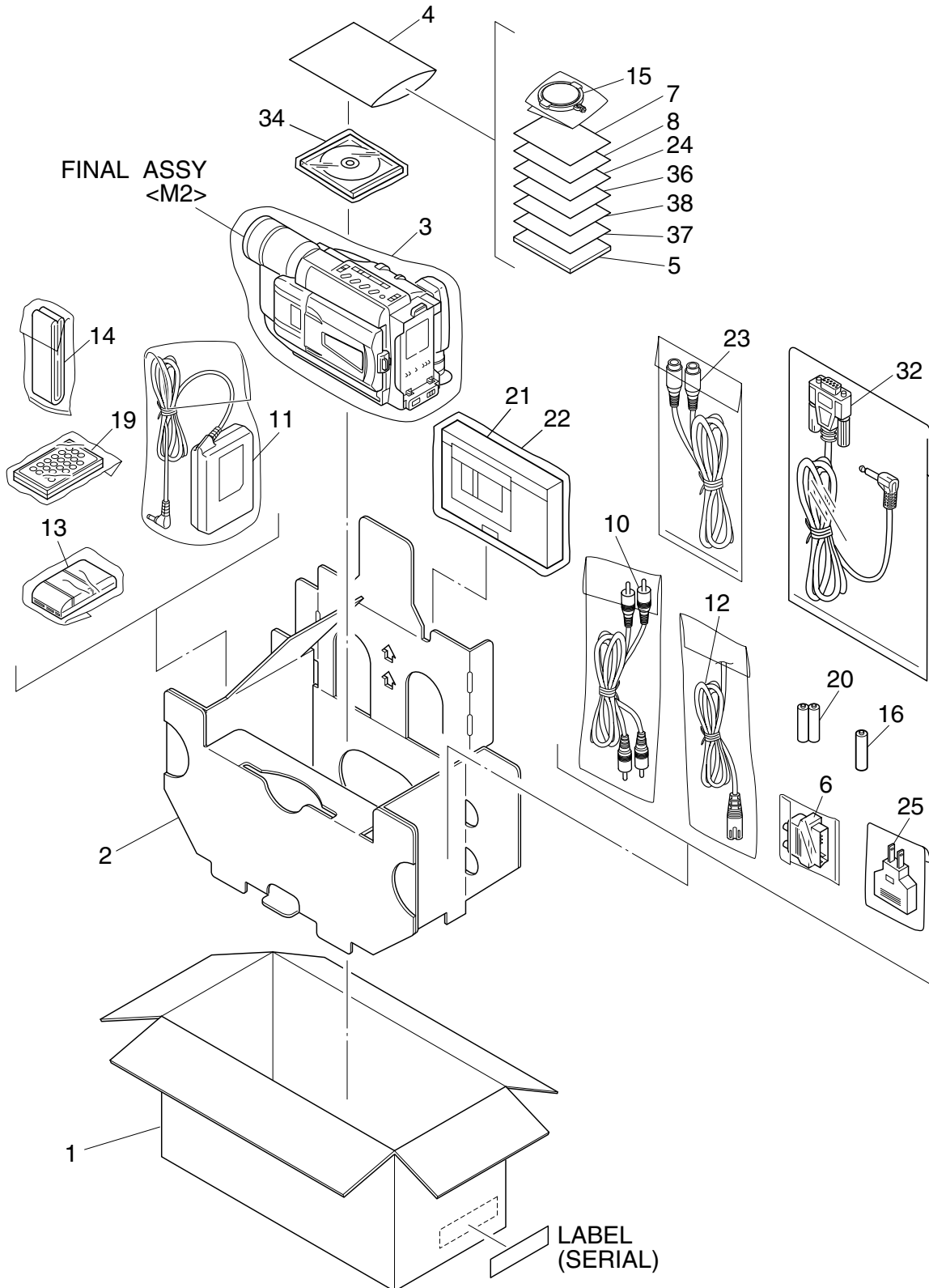
SECTION 5 PARTS LIST

SAFETY PRECAUTION

Parts identified by the ⚠ symbol are critical for safety. Replace only with specified part numbers.

5.1 PACKING AND ACCESSORY ASSEMBLY <M1>

The instruction manual to be provided with this product will differ according to the destination.



△ REF No. PART No. PART NAME, DESCRIPTION

PACKING AND ACCESSORY ASSEMBLY <M1>

1	LY32345-001B	PACKING CASE,C,D,E
	LY32545-002A	PACKING CASE,B
	LY32545-003A	PACKING CASE,A
	LY32563-003B	PACKING CASE,F
2	LY32553-001A	CUSHION
3	LY30023-002A	POLY BAG
4	QPA02003506	POLY BAG
△ 5	LYT0860-002A	INST.BOOK(GE),D
△	LYT0860-002B	INST.BOOK(GE),A,C
△	LYT0860-003B	INST.BOOK(FR),A,C
△	LYT0860-004B	INST.BOOK(DU),A,C
△	LYT0860-005B	INST.BOOK(SP),A,C
△	LYT0860-006B	INST.BOOK(IT),A,C
△	LYT0860-007A	INST.BOOK(DA),D
△	LYT0860-008A	INST.BOOK(FI),D
△	LYT0860-009A	INST.BOOK(SW),D
△	LYT0860-010A	INST.BOOK(NO),D
△	LYT0860-011A	INST.BOOK(RU),E
△	LYT0860-012A	INST.BOOK(CZ),E
△	LYT0860-013A	INST.BOOK(PO),E
△	LYT0860-014A	INST.BOOK(HU),E
△	LYT0863-001B	INST.BOOK(FR),B
△	LYT0868-001B	INST.BOOK(EN),F
△	LYT0868-002B	INST.BOOK(CH),F
△	LYT0868-003B	INST.BOOK(RU),F
△	LYT0868-004B	INST.BOOK(AR),F
6	PEMC1174	CONNECTOR,CABLE ADAPTER,A,B,C,D,E
7	BT-54008-2	GUARANTY CARD,B
8	BT-54013-2	WARRANTY CARD,A,C,D,E
10	PEAC0362-150	CABLE ASSY,AUDIO/VIDEO CABLE
△ 11	LY20847-001B	AC ADAPTER,AP-V12EG
△ 12	QMPL120-190-JR	POWER CORD
△ 13	LY31199-001A	BATTERY PACK,BN-V20BU,C,D,E
△	YQ10629E	BATTERY PACK,BN-V11U-E,A,F
△	YQ10629F	BATTERY PACK,BN-V11U-F,B
14	LY20186-001A	SHOULDER STRAP
15	LY43388-001A	LENS CAP
16	-	BATTERY,AA(R6),F
19	LY42129-001A	REMOTE CONTROL UNIT,RM-V715U,F
20	-	BATTERY,AAA(R03),X2,F
21	YQ31963B-3	CASSETTE ADAPTER,C-P7U,F
22	YQ43446	POLY BAG,F
23	QAM0004-003	S-VIDEO CABLE,B,C,D,E
△ 24	LYT0609-001A	SHEET(CON.PLUG),F
△ 25	PEMC1012-02	CONVERSION PLUG,F
32	QAM0384-001	PC CONNECTION CABLE,C,D,E,F
34	LY32210-020B	CD ROM ASSY,C,D,E,F
36	LYT0974-001A	SHEET(ATT.),C,D,E,F
△ 37	LYT0862-001A	INST.BOOK(SOFT.EN),F
△	LYT0862-002A	INST.BOOK(SOFT.IT),C
△	LYT0862-003A	INST.BOOK(SOFT.FR),C
△	LYT0862-004A	INST.BOOK(SOFT.IT),C
△	LYT0862-005A	INST.BOOK(SOFT.IT),C
△	LYT0862-006A	INST.BOOK(SOFT.IT),C
△	LYT0862-007A	INST.BOOK(SOFT.DA),D
△	LYT0862-008A	INST.BOOK(SOFT.FI),D
△	LYT0862-009A	INST.BOOK(SOFT.SW),D
△	LYT0862-010A	INST.BOOK(SOFT.NO),D
△	LYT0862-011A	INST.BOOK(SOFT.CH),F
△	LYT0862-012A	INST.BOOK(SOFT.CH),E,F
38	LYT0934-001A	SHEET(AGREMENT),C,D,E,F

MODEL	MARK
GR-FXM383EG-X	A
GR-SXM28EG-F	B
GR-SXM58EG-X	C
GR-SXM58EG-Y	D
GR-SXM58EG-Z	E
GR-SXM780A	F

• **INSTRUCTIONS**

GE GERMAN
 FR FRENCH
 DU DUTCH
 SP SPANISH
 IT ITALIAN
 DA DANISH
 FI FINNISH
 SW SWEDISH
 NO NORWEGIAN
 RU RUSSIAN
 CZ CZECH
 PO POLISH
 HU HUNGARIAN
 EN ENGLISH
 CH CHINESE
 AR ARABIC

5-3



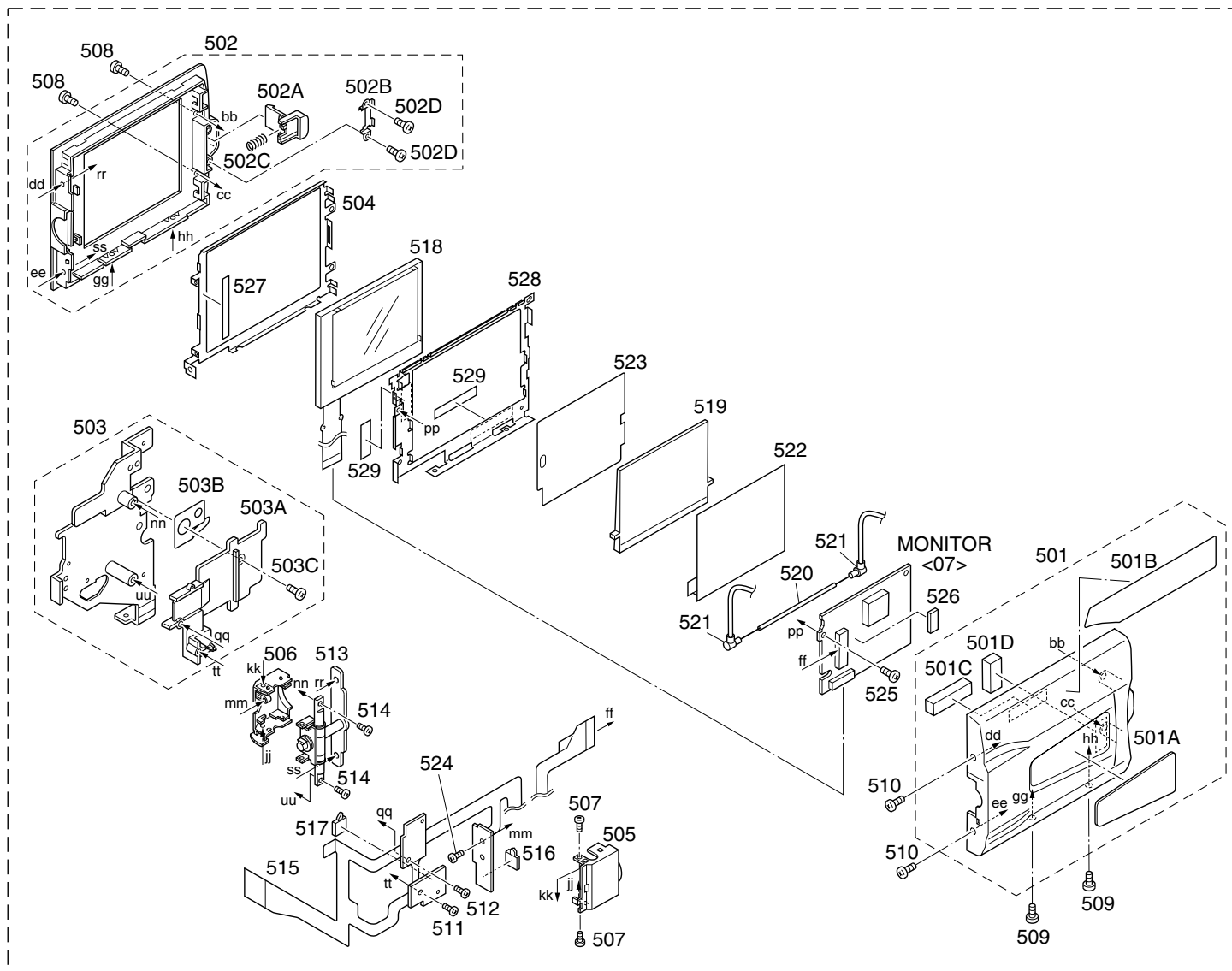
#	△ REF No.	PART No.	PART NAME, DESCRIPTION

FINAL ASSEMBLY <M2>			
101		LY20694-002B	CASSETTE COVER(M)ASSY,F
		LY20694-009B	CASSETTE COVER(M)ASSY,E
		LY20694-010A	CASSETTE COVER(M)ASSY,A
		LY20694-011A	CASSETTE COVER(M)ASSY,B,C,D
101A		LY40075-004A	LABEL/CAUTION
101B		LY42883-001A	MARK
101C		LY40559-001A	SHIELD SHEET
101D		LY40076-001A	SPACER,X2
101E		LY43537-001A	STICKER(E),B,E
102		QYSLSP2030D	SCREW,X2
103		LY10257-042A	UPPER CASE(M),A
		LY10257-043A	UPPER CASE(M),B
		LY10257-045A	UPPER CASE(M),C,D,E
		LY10257-049A	UPPER CASE(M),F
104		QYSLSP2030D	SCREW,X2
105		QYSLSF2060D	SCREW,X2
110		LY20684-005A	LOWER CASE ASSY,A
		LY20684-022A	LOWER CASE ASSY,B
		LY20684-023A	LOWER CASE ASSY,C,D,E,F
110A		LY40081-001A	CAP
110B		LY20682-001A	GRIP BELT
110C		LY30018-003A	SPECIAL SCREW
110D		QAS0061-001	SPEAKER
110E		LY42764-001B	HOLDER(SPEAKER)
110F		QYSLSF2050Z	SCREW
111		LY31945-003A	COVER(JACK)
112		LY31946-001A	COVER(JIG)
113		QYSLSF2050Z	SCREW,X3
114		QYSLSF2060D	SCREW
115		QYSLSF2060D	SCREW
116		QYSLSF2060D	SCREW,X4
117		QYSLSF2060D	SCREW,X2
118		QYSLSF2060D	SCREW
125		LY20614-002C	TOP OPERATION UNIT,C,D,E,F
		LY20614-010C	TOP OPERATION UNIT,A
		LY20614-014C	TOP OPERATION UNIT,B
126		QYSLSF2060D	SCREW,X2
127		LY32061-006A	STICKER(D),F
130		LY20615-005E	REAR UNIT,A,B
		LY20615-007B	REAR UNIT,C,D,E,F
131		QYSLSF2060D	SCREW,X3
135		LY20683-029A	FRONT COVER ASSY,C,D,E,F
		LY20683-030A	FRONT COVER ASSY,B
		LY20683-031A	FRONT COVER ASSY,A
135A		LY31937-001A	HOOD
135B		LY31938-001A	COVER(HOOD)
135C		LY31936-001A	RING
135D		LY32482-001A	MICROPHONE
135E		QYSLSF2060D	SCREW,X4
135F		LY30934-022A	COVER(LIGHT),B
		LY32040-001A	DC LIGHT,A,C,D,E,F
135G		LY32058-001A	STICKER(A),B
		LY32058-002A	STICKER(A),A
		LY32058-003A	STICKER(A),C,D,E,F
135H		LY32060-004A	STICKER(C),C,D,E,F
		LY32060-005A	STICKER(C),A,B
135J		LY30029-0B4A	SPACER(A),A,C,D,E,F
△ 135K		YQ44341-6	CAUTION LABEL,A,C,D,E,F
136		QYSLSF2060D	SCREW,X3
139		QYSPSTU1725M	SCREW

#	△ REF No.	PART No.	PART NAME, DESCRIPTION
140		LY20832-001B	FRAME ASSY,A,C,D,E,F
		LY20832-002B	FRAME ASSY,B
140A		YQ31843	BASE
140B		QYSLSF2060D	SCREW,X2
140C		LY30029-0A4A	SPACER(A)
140D		LY41082-001A	CUSHION(OP),X2
140E		YQ43810-1-1	CONTACT(LIGHT),X2,A,C,D,E,F
140F		WJM0259-001A	E-SI C WIRE C-F,FRAME-MAIN CN6,A,C,D,E,F
141		LY32327-001A	SHIELD CASE(MAIN)
142		QYSPSPU1720Z	SCREW
143		QYSLSF2060D	SCREW
144		QYSLSF2060D	SCREW
145		WJT0072-001A	E-CARD WIRE,OP-MAIN CN15
146		QAL0389-001	FPC,MAIN CN22-CCD CN5301
147		LY20613-001B	ZOOM UNIT
148		QYSLSF2060D	SCREW,X4
149		LY41173-001A	SPECIAL SCREW,X2
150		LY30018-050A	SPECIAL SCREW,X2
151		QYSLSP2030D	SCREW
155		LY31808-001C	CASSETTE HOUSING FINAL ASSY
156		LY42722-003A	SCREW,X4
157		LY30176-001A	CASSETTE COVER INSIDE
158		LY31956-001A	BRACKET(CASSETTE COVER)
159		LY31790-001A	FRONT FRAME ASSY
159A		YQ44144-1-1	TAPE GUIDE
160		SPSH1725M	SCREW,X2
161		LY32326-001A	BRACKET(MECHA)
162		LY42722-003A	SCREW,X2
163		QYSLSF1750D	SCREW
164		LY31807-001A	SIDE BRACKET L
165		LY42722-003A	SCREW
- OPTICAL BLOCK SECTION -			
251		LY30948-003A	OP BLOCK ASSY
251A		PTY30948-002	FOCUS MOTOR
251B		PTY30948-301	ZOOM MOTOR
251C		PTY30151-016	TAPPING SCREW,X9
251D		PTY30948-006	IRIS MOTOR UNIT
252		LY43383-001A	OPTICAL LPF
253		LY31370-001A	SPACER RUBBER
254		LY20497-001A	CCD SPACER
255		LYH30374-001A	CCD BASE ASSY
256		QYSPSGU2080Z	SCREW,X2
257		LY30018-072A	SPECIAL SCREW

5.3 MONITOR ASSEMBLY <M5> [GR-SXM780A]

500



▲ REF No. PART No. PART NAME, DESCRIPTION

MONITOR ASSEMBLY <M5>

▲ 500	LY20836-004A	MONITOR ASSY
▲ 501	LY20834-001A	MONITOR COVER ASSY
501A	LY32329-002A	PLATE(WINDOW)
501B	LY32554-001A	STICKER(B)
501C	LY30029-0R3A	SPACER(A)
501D	LY30029-0R4A	SPACER(A)
502	LY32035-001A	MONITOR CASE(3)ASSY
502A	LY31954-001A	KNOB(LOCK)
502B	LY42760-001A	BRACKET(LOCK)
502C	LY30002-043A	COMPRESION SPRING
502D	LY30018-063A	SPECIAL SCREW,X2
503	LY32034-003A	BRACKET(UPPER)ASSY
503A	LY20652-003A	HOLDER
503B	LY42761-001A	EARTH PLATE
503C	QYSLSP2025D	SCREW
504	LY32332-001A	SHIELD CASE(3)
505	LY31939-001A	HINGE COVER(UPPER)
506	LY31940-001A	HINGE COVER(LOWER)

▲ REF No. PART No. PART NAME, DESCRIPTION

507	LY30018-0C9A	SPECIAL SCREW,X2
508	LY30018-052A	SPECIAL SCREW,X2
509	LY30018-0C9A	SPECIAL SCREW,X2
510	LY30018-0C5A	SPECIAL SCREW,X2
511	QYSLSF2040D	SCREW
512	QYSLSP2070D	SCREW
513	LY31957-001A	HINGE ASSY
514	LY30018-090A	SPECIAL SCREW,X2
515	QAL0391-001	FPC
516	NSW0095-001X	DETECT SWITCH,REVERSE
517	NSW0105-001X	DETECT SWITCH,OPEN
518	QLD0213-001	LCD MODULE
519	LY43391-001A	LIGHT SCREEN
520	QLL0111-001	LAMP
521	LY43394-001A	HOLDER,X2
522	LY43395-001A	SHEET
523	LY43363-001A	DIFFUSION SHEET(3)
524	LY30018-063A	SPECIAL SCREW
525	LY30018-0C9A	SPECIAL SCREW
526	LY30016-049A	SPACER-A
527	LY30029-0R6A	SPACER(A)
528	LY32333-001A	LCD FRAME(3)
529	LY30029-0R5A	SPACER(A),X2